



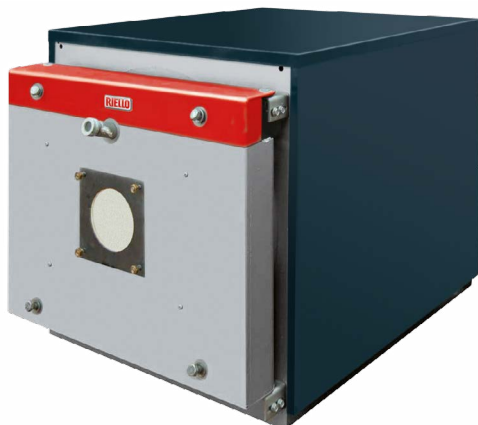
RTQ 3S



RIELLO
Energy For Life

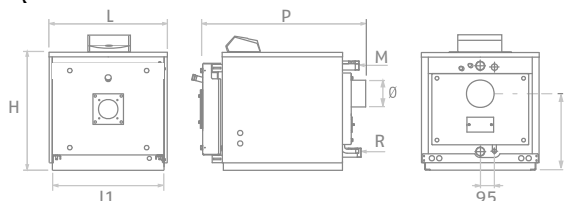
Двуходови стоманени котли за изгаряне на течни или газообразни горива

RTQ 3S



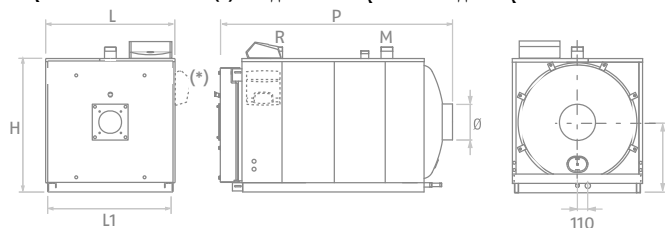
- В съответствие с ErP (с изключение на модели 35, 55 и 70)
- Напълно обмокрена реверсивна горивна камера

RTQ 3S 35-166



RTQ 3S 217-2400

(* Модели от RTQ 1100 3S до RTQ 2400 3S



M = подаваща
R = връщаща

Описание	H	L	P	L1	D	M	R	Ø	Тегло
	mm	mm	mm	mm	mm	Ø	Ø	mm	kg
RTQ 35 3S	605	605	880	560	310	1" 1/4	1" 1/4	139	137
RTQ 55 3S	605	605	1030	560	310	1" 1/4	1" 1/4	139	160
RTQ 70 3S	740	705	970	660	384	1" 1/2	1" 1/2	179	199
RTQ 91 3S	740	705	1120	660	384	1" 1/2	1" 1/2	179	225
RTQ 115 3S	905	805	1230	753	500	G2"	G2"	180	283
RTQ 166 3S	955	853	1405	803	525	G2"	G2"	180	355
RTQ 217 3S	1060	925	1580	875	525	G2"1/2	G2"1/2	200	455
RTQ 255 3S	1060	925	1580	875	525	G2"1/2	G2"1/2	200	473
RTQ 318 3S	1110	975	1810	925	550	G2"1/2	G2"1/2	250	610
RTQ 349 3S	1110	975	1810	925	550	G2"1/2	G2"1/2	250	610
RTQ 448 3S	1275	1150	2140	1100	655	DN 80	DN 80	300	970
RTQ 511 3S	1275	1150	2140	1100	655	DN 80	DN 80	300	970
RTQ 575 3S	1385	1220	2410	1170	690	DN 100	DN 100	300	1189
RTQ 639 3S	1385	1220	2410	1170	690	DN 100	DN 100	300	1189
RTQ 766 3S	1440	1285	2550	1235	715	DN 100	DN 100	350	1406
RTQ 896 3S	1530	1360	2865	1310	755	DN 125	DN 125	400	1817
RTQ 1100 3S	1630	1450	3130	1400	820	DN 125	DN 125	400	2280
RTQ 1300 3S	1725	1535	3155	1485	865	DN 125	DN 125	450	2780
RTQ 1600 3S	1822	1610	3235	1555	900	DN 150	DN 150	500	3160
RTQ 2100 3S	1972	1715	3515	1660	1000	DN 175	DN 175	500	4170
RTQ 2400 3S	1972	1715	3515	1660	1000	DN 175	DN 175	500	4180
RTQ 2700 3S	2090	1865	3560	1895	1050	DN 175	DN 175	500	4826
RTQ 3000 3S	2162	1935	3670	1885	1080	DN 175	DN 175	500	5346

Provided with high-performance stainless steel turbulators ensuring wide exchange surface, in order to optimize the heat exchange and allow a homogeneous thermal load. Steel boilers RTQ 3S produce hot water both for heating and for domestic use when they are combined with RIELLO 7300 DHW tank (RTQ 35-91 3S models). The front door features an ambidextrous opening and is provided with a highly-insulating mineral-wool double seal. Casing is made of stove-enamelled sheet. The control panel should be ordered separately.

- High efficiency both punctual and seasonal
- Operation at modulating temperature (minimum allowed return temperature 55 °C)
- Several solutions thanks to the combination with RIELLOtech control panels.

GROUP COMPOSITION

Code (*)	Composed by (**)	Description
20025617	20020653	RTQ 35 3S (body)
	20022108	casing 35 3S
	20022113	door frame + logo RTQ 35-55 3S
20025618	20020654	RTQ 55 3S (body)
	20022109	casing 55 3S
	20022113	door frame + logo RTQ 35-55 3S
20025619	20020655	RTQ 70 3S (body)
	20022110	casing 70 3S
	20022114	door frame + logo RTQ 70-91 3S
20024200	20020656	RTQ 91 3S (body)
	20022111	casing 91 3S
	20022114	door frame + logo RTQ 70-91 3S
4032606.0	4032606	RTQ 115 3S (body)
	4032660	casing 90-115 3S
	4032667	door frame + logo RTQ 90-115 3S
4032607.0	4032607	RTQ 166 3S (body)
	4032661	casing 166 3S
	4032668	door frame + logo RTQ 166 3S
4032608.0	4032608	RTQ 217 3S (body)
	4032662	casing 217-255 3S
	4032669	door frame + logo RTQ 217-255 3S
4032609.0	4032609	RTQ 255 3S (body)
	4032662	casing 217-255 3S
	4032669	door frame + logo RTQ 217-255 3S
4032610.0	4032610	RTQ 318 3S (body)
	4032663	casing 318-349 3S
	4032670	door frame + logo RTQ 318-349 3S
4032611.0	4032611	RTQ 349 3S (body)
	4032663	casing 318-349 3S
	4032670	door frame + logo RTQ 318-349 3S
4032613.0	4032613	RTQ 448 3S (body)
	4032664	casing 384-448-511 3S
	4032671	door frame + logo RTQ 384-448-511 3S
4032614.0	4032614	RTQ 511 3S (body)
	4032664	casing 384-448-511 3S
	4032671	door frame + logo RTQ 384-448-511 3S
4032615.0	4032615	RTQ 575 3S (body)
	4032665	casing 575-639 3S
	4032672	door frame + logo RTQ 575-639 3S
4032616.0	4032616	RTQ 639 3S (body)
	4032665	casing 575-639 3S
	4032672	door frame + logo RTQ 575-639 3S
4032617.0	4032617	RTQ 766 3S (body)
	4032666	casing 766 3S
	4032673	door frame + logo RTQ 766 3S
20008436	4032630	RTQ 896 3S (body)
	4032682	casing 896 3S
	4032683	door frame + logo RTQ 896 3S
20012427	4032631	RTQ 1100 3S (body)
	20011357	casing 1100 3S
	20012563	door frame + logo RTQ 1100 3S
20008435	4032632	RTQ 1300 3S (body)
	4032675	casing 1300 3S
	4032679	door frame + logo RTQ 1300 3S
20016656	4032633	RTQ 1600 3S (body)
	20011358	casing 1600 3S
	20014064	door frame + logo RTQ 1600 3S
20016657	4032634	RTQ 2100 3S (body)
	20011359	casing 2100 3S
	20012065	door frame + logo RTQ 2100 3S
20018817	4032635	RTQ 2400 3S (body)
	20011359	casing 2100 3S
	20012065	door frame + logo RTQ 2100 3S
20106515	20104196	RTQ 2700 3S (body)
	20051610	casing 2700 3S
	20051613	door frame + logo RTQ 2700 3S
20106514	20104197	RTQ 3000 3S (body)
	20051536	casing 3000 3S
	20051495	door frame + logo RTQ 3000 3S

(*) By ordering this code, you will receive the whole product.

(**) Consider that each single component can be ordered separately.

ТЕХНИЧЕСКИ ХАРАКТЕРИСТИКИ

Output kW	Input kW	Efficiency Pn (80°-60°C)	Efficiency 30% Pn (80°-60°C)	Code	Description	Notes
33,8	34,8	94,2	95,9	20025617	RTQ 35 3S	(A)
53,2	55,0	93,8	95,5	20025618	RTQ 55 3S	(A)
67,8	69,0	94,2	95,9	20025619	RTQ 70 3S	(A)
87,1	90,0	94,2	95,9	20024200	RTQ 91 3S	(A) (B)
109,7	115,0	95,8	95,1	4032606.0	RTQ 115 3S	(A) (B)
158,7	166,0	95,6	95,6	4032607.0	RTQ 166 3S	(A) (B)
206,8	217,0	95,3	96,3	4032608.0	RTQ 217 3S	(A) (B)
243,3	255,0	95,8	96,5	4032609.0	RTQ 255 3S	(A) (B)
303,4	318,0	95,6	96,5	4032610.0	RTQ 318 3S	(A) (B)
332,0	348,0	95,4	96,7	4032611.0	RTQ 349 3S	(A) (B)
427,4	448,0	95,4	96,7	4032613.0	RTQ 448 3S	
487,5	511,0	95,4	96,7	4032614.0	RTQ 511 3S	
548,6	575,0	95,4	96,7	4032615.0	RTQ 575 3S	
609,6	639,0	95,4	96,7	4032616.0	RTQ 639 3S	
730,8	766,0	95,4	96,7	4032617.0	RTQ 766 3S	
854,8	896,0	95,4	96,7	20008436	RTQ 896 3S	
1049,4	1100,0	95,4	96,7	20012427	RTQ 1100 3S	
1240,2	1300,0	95,4	96,7	20008435	RTQ 1300 3S	
1526,4	1600,0	95,4	96,7	20016656	RTQ 1600 3S	
2003,4	2100,0	95,4	96,7	20016657	RTQ 2100 3S	
2289,6	2400,0	95,4	96,7	20018817	RTQ 2400 3S	
2576,0	2700,0	95,4	96,7	20106515	RTQ 2700 3S	
2860,0	3000,0	95,4	96,7	20106514	RTQ 3000 3S	

Maximum operating pressure 5 bar for RTQ 35 3S - RTQ 766 3S models.

Maximum operating pressure 6 bar for RTQ 896 3S - RTQ 2400 3S models.

(A) Gas products and oil products (models 35, 55 and 70) are only for replacement, till 1st January 2018, in conformity of point 2 (G) Article 1 of Regulation EU N. 813/2013.

(B) Oil products are compliant to ErP Directive (EU Regulation N° 813/2013).

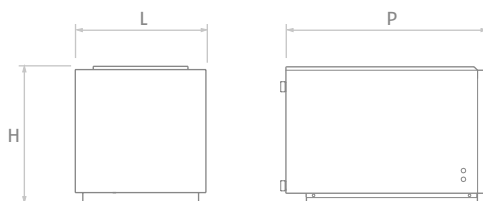
ПРЕПОРЪЧИТЕЛНО СЪЧЕТАВАНЕ С ГОРЕЛКА

	Back-pressure in the combustion chamber (mbar)	GAS (A)												
		TWO STAGE						PROGRESSIVE TWO STAGE OR MODULATING WITH MECHANICAL CAM (**)						
		RS 44 MZ t.l.	RS 50 t.l.	RS 70 t.l.	RS 100 t.l.	RS 130 t.l.	RS 190 t.c. (*)	RS 50/M MZ t.l.	RS 70/M t.l.	RS 100/M t.l.	RS 130/M t.l.	RS 190/M t.c. (*)	RS 250/M MZ t.l.	GAS 9 P/M t.l.
3789111 3789141	3784703	3785103	3785303	3785503	3785813	3781622	3789611	3789711	3789811	3787623	3788411	3754038	3754138	
RTQ 448 3S	3,5	o	o				o							
RTQ 511 3S	4,2		o				o							
RTQ 575 3S	3,4			o				o	o					
RTQ 639 3S	4,5			o	o			o	o					
RTQ 766 3S	5,3				o				o					
RTQ 896 3S	6,0				o				o					
RTQ 1100 3S	3,3					o				o				
RTQ 1300 3S	5,3					o				o				
RTQ 1600 3S	4,7						o				o			
RTQ 2100 3S	5,1											o		
RTQ 2400 3S	7,6												o	
RTQ 2700 3S	6,3												o	
RTQ 3000 3S	7,9													o
						3010443					3010443			
EXTENDED HEAD														

(*) Also available in extended head version.

(***) Modulating in combination with RIELLOtech CLIMA TOP/COMFORT or with the specific electronic modulation accessory.

(A) Burners must be completed by the gas train.

ТЕХНИЧЕСКИ ХАРАКТЕРИСТИКИ RIELLO 7300


Capacity liters	Max absorbed power kW	Domestic water production l/h	H mm	L mm	P mm	Weight kg	Energy efficiency class	Code	Description
130	31,5	775	625	600	830	85		20102992	RIELLO 7300.130 H
170	37,0	910	625	600	1010	100		20102993	RIELLO 7300.170 H
270	50,0	1230	730	700	1130	140		20102994	RIELLO 7300.270 H

COMBINATIONS BOILER/CYLINDER

	RIELLO 7300		
	130 H	170 H	270 H
RTQ 35 3S	○	○	
RTQ 55 3S	○	○	
RTQ 70 3S			○
RTQ 91 3S			○

ACCESSORIES

Description	Code
Hydraulic kit for RIELLO 7300 (RTQ 35-55 3S models)	4030030
Hydraulic kit for RIELLO 7300 (RTQ 70-91 3S models)	4030032
Burner flange	4031395

RIELLOtech CONTROL PANELS (to be ordered separately)

Climatic control with RIELLOtech Clima Top and RIELLOtech Clima Comfort.
Thermostatic control with RIELLOtech PRIME.

RielloTech	Installation	Code	Boiler models
RIELLOtech CLIMA TOP	Horizontal	4031065	RTQ 3S 90÷2400
RIELLOtech CLIMA TOP	Vertical	4031070	RTQ 3S 448÷4000
RIELLOtech CLIMA COMFORT	Horizontal	4031064	RTQ 3S 90÷2400
RIELLOtech CLIMA COMFORT	Vertical	4031069	RTQ 3S 448÷4000
RIELLOtech PRIME	Horizontal / Vertical	20010820	All models
RIELLOtech PRIME ACS	Horizontal / Vertical	20010437	All models

(*) With kit relays, cod. 20013035

(**) With two stage burner management kit, cod. 4031067

For more details on control panels, please refer to pages 285 - 292.



“Калория”

1220 София, ул. История славянобългарска № 8
тел.: 831-11-30, 831-11-31 факс: 831-11-34
GSM: 0898 45 15 05, 0878 91 33 14

www.caloria.bg; riello@techno-link.com

RIELLO